



Product Code: 29217 (Toyota Hilux 2016+)



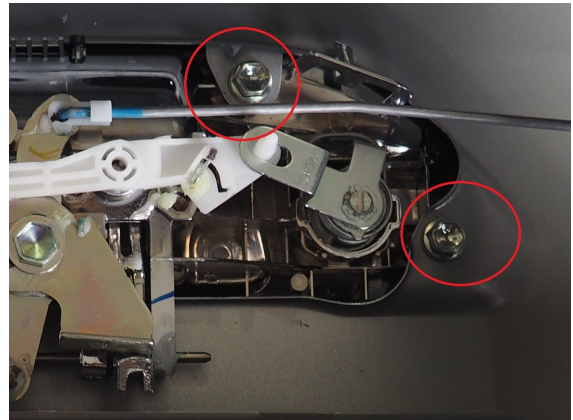
1) Please check you have all the required parts before starting installation:

- 1 x Base plate with actuator
- 1 x Wiring loom
- 8-10 x Cable Ties
- 1 x Cable Protection Tube

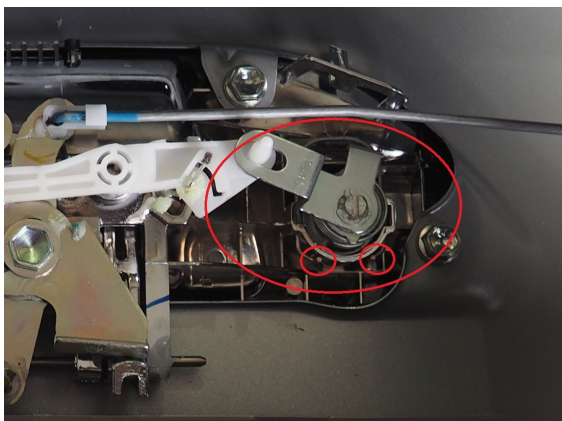
1) Open Tailgate, Undo 10 screws and remove metal panel to allow access into the inside of the tailgate



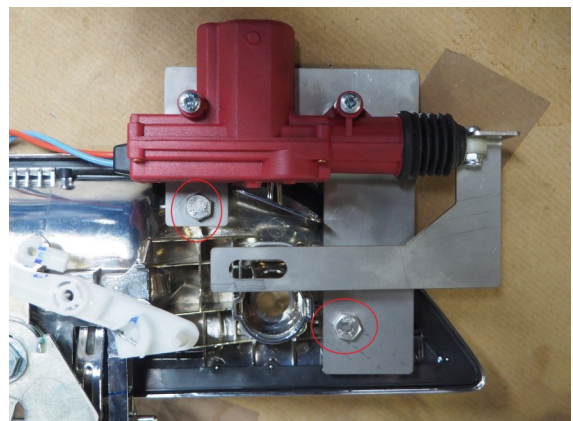
2) Undo 2 Bolts from the Handle (this is the location you will mount the power lock)



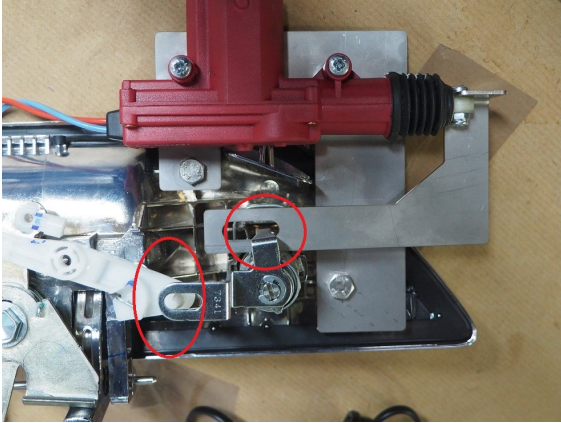
3) Remove Key barrel lock (press the spring clip together and simply pull out)



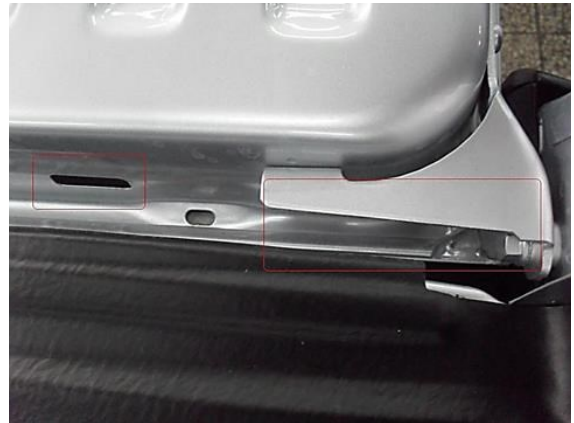
4) Mount Power Lock—Fix into position by reusing the bolts you removed in step 2



5) Refit Key Barrel—Simply slide back into position, Ensure you slide through power lock and onto the trucks lock mechanism



6) Feed Cables out of tailgate and Underneath the truck body, run the cable to the drivers or Passengers front door area



7) Under the front seats locate a grommet and puncture a small hole to feed the cables into the Vehicle



8) Pull up Door sill guard to locate vehicle wiring loom and allow access to the Power lock cable



9) Connect cable using the scotch locks (or solder) please ensure the cables get a good connection (see next page for further details)

9a) Connect red to White (White on vehicle loom)

9b) Connect Black to Black

Please be careful when connecting the wires as there are several White and Black wires in the vehicle loom

If you have electrical tester we suggest using this to get the correct fitting.

When testing the cables you should get a 12v Flash Reading when pressing the central locking,

10) Test the kit works by clicking the central locking and see if the tailgate locks / unlocks.

11) If everything works replace tailgate cover

***Please note we always advise to cover any connections with electrical tape. Also ensure any cables are kept away from heat sources such as exhaust system**

Eagle4x4 recommend that installation is done by a licenced Auto Electrician. Any electrical faults due to improper installation will not be warranted by Eagle4x4

